

vBroker Management Center

Benefits

- Visually appealing single pane-of-glass graphical management for physical and virtualized traffic
- Simplified device management
- Rapid policy creation
- True centralized management of NETSCOUT® Packet Flow Switch and VSS Network Packet Broker devices
- TCO and OpEx savings
- Streamlined configuring and updating

Features

- Graphical network topology
- Multiple administrator and user access and privileges
- Bulk configuration and software upgrades
- Drag and drop ingress to egress traffic mapping
- Monitor traffic in and from virtual and physical network environments
- Config file management and scheduling
- Network traffic statistics reporting as well as microburst measurement
- Auto-detection of all PFS, vBroker, and Optimizer Series products in a network infrastructure
- vNetConnect™ for directing traffic from VMware and/or Cisco virtual environments

Product Description

The vBroker Management Center (vMC) is a client-server based management software application that enables the visualization and management of both multiple interconnected and standalone NETSCOUT packet flow systems (PFS) and VSS network packet broker (NPB) appliances through a central server. Each PFS/NPB node connected to the vMC can be viewed in a group structured list within the application. Each node within vMC can be administered remotely (individual or group) for updates and configurations, while providing reports at both system and granular per-port levels.

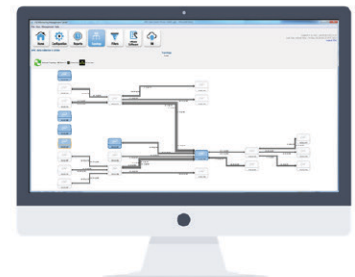
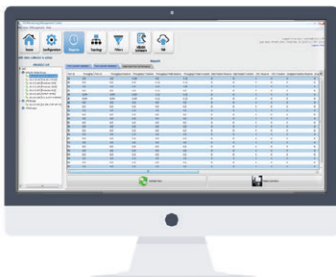
vMC provides all of the configuration options available when managing nodes individually including model specific settings and filters. Additionally, the vMC offers several features that support the management of a system of stackable nodes, also known as a vMesh architecture. These features include vMesh topology view, a centralized filter library manager, graphical filter mapping, and a Virtual Distributed Switch (vDS) port mirroring manager for monitoring traffic between virtual machines in both VMware vCenter and/or Cisco Nexus environments.

Packet Flow Switch and Network Packet Broker Appliances

NETSCOUT helps you maximize the return from your network intelligence infrastructure. Using our network packet brokers together with vMC, you can make better use of your monitoring and security tools, simplify operational complexity and realize a higher ROI from additional cost savings and service quality improvements.

NETSCOUT PFS appliances solve a variety of network-related IT challenges in your network and data centers, including improving the link-layer visibility and data access of monitoring and security tools, accelerating the time to diagnose performance problems and security incidents, and making sure CapEx and OpEx costs remain stable as network size and speeds grow.

With NETSCOUT's visionary vMesh™ approach to architecture and vMC approach to management, you get the flexibility and modularity to deploy just the appliances you need and when, with the ability to scale link-layer visibility and data access to a systemlevel architecture with up to 250+ devices and 4,000 ports globally. The business benefits include more flexible capital requirements, higher tool utilization and ROI, and lower operating costs.



SPECIFICATIONS

vBroker Management Center Server Installation

MINIMUM REQUIREMENTS

Memory	16 GB RAM
Hard Drive	32 GB free space
Processor	Dual physical processors with a minimum of two cores each, running at 2.93GHz on a dedicated server
Linux Operating System	Redhat Enterprise 6.x, CentOS 6.x, and Debian 7.x, 64-bit
Windows Operating System	Windows 2008 Server R2, Windows 2012 Server, 64-bit
Environment	Java Runtime Environment (JRE): Version 8. vMC has been tested with JRE build 1.8.0.91
Database	MySQL: Version 5.5.35 or later. vMC has been tested with MySQL 5.5, 5.6, and 5.7
Accessing FTP Server	<p>FTP server: To use vMC for distributing PFS system software images to managed PFS nodes, or for storing and retrieving saved PFS configurations, the FTP server must be on the network and the vMC server must be able to log in either:</p> <ul style="list-style-type: none"> • anonymously using FTP, or • with known username and password using SFTP. <p>You must be able to store PFS system software images on this FTP server. If you do not use these features of vMC, then no FTP server is required.</p>

vBroker Management Center Client Installation

MINIMUM REQUIREMENTS

Memory	4 GB RAM
Hard Drive	8 GB free space
Processor	Standard laptop or desktop PC
Operating System	Ubuntu, Redhat, Debian, or CentOS distribution of Linux, 64-bit version, Windows 7 (or higher), 64-bit version
Environment	Java Runtime Environment (JRE): Version 8. vMC has been tested with JRE build 1.8.0_91.

Supported Products

NETSCOUT Packet Flow Switch	nGenius 2204 PFS, nGenius 4204 PFS, nGenius 6010 PFS
VSS Network Packet Broker	v16x8 Copper TAP, Optimizer 2400, VB120, and other Distributed Series and vBroker Series products
vNode Software	PFOS/VSSM 3.9.x, 3.10.x, 3.11.x, 3.12, and later PFOS/VXOS 4.3.x, 4.5.x, 4.7, and later



Corporate Headquarters
NETSCOUT Systems, Inc.
Westford, MA 01886-4105
Phone: +1 978-614-4000
www.netscout.com

Sales Information
Toll Free US: 800-309-4804
(International numbers below)

Product Support
Toll Free US: 888-357-7667
(International numbers below)

NETSCOUT offers sales, support, and services in over 32 countries. Global addresses, and international numbers are listed on the NETSCOUT website at: www.netscout.com/company/contact-us-2/