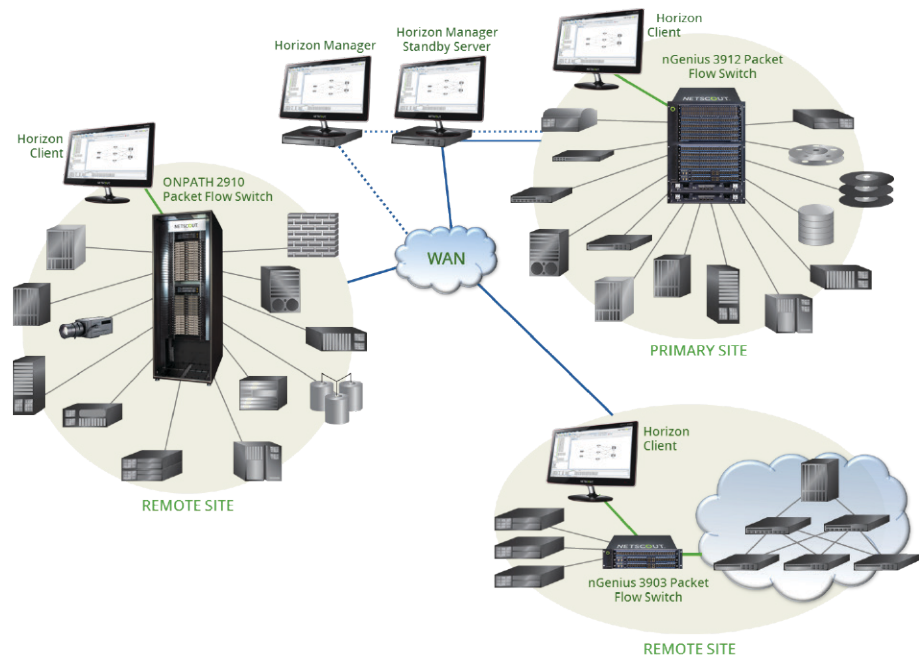


# Horizon Management Software for Test Optimization

## Highlights

- Intelligent connection manager to build and schedule changes
- Simple drag and drop provisioning for fast, guaranteed connectivity and packet flows
- Secure role based access control with AAA capabilities
- Remote management of 32 switches and over 100,000 ports
- Automated Cross-Switch Link Management for seamless connections between NetScout platforms
- Manage and share monitor, test, and generator tools
- System alarming and user activity logging for rapid isolation of problems
- Redundant architecture for reliability and scalability
- Intuitive Graphical User Interface or CLI access for automation via scripting or 3rd party integration



Horizon™ Management Software provides intelligent, high-performance connectivity and monitoring with simple point-and-click provisioning and secure remote control. Compared to manual patching, static TAPs, SPAN ports, or complex mesh switching architectures, the software and hardware platforms combine to help network managers and operators conserve time, increase utilization, and save money. Horizon Management Software securely manages up to 32 separate switches and over 100,000 meshed ports in a single application. Connections can be managed based on authenticated user access control across groups and domains for instant activation, or scheduled for streamlined automation.

Horizon Management Software and the nGenius® 3900 series and ONPATH 2900 series packet flow switch family of switches are engineered to meet the rapid reconfiguration of test automation, the challenges of cloud network infrastructures, and the critical demands of CyberSecurity.

## Intelligent

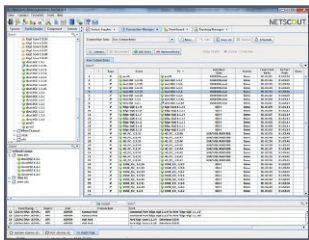
Horizon Management Software provides a new level of intelligence, visibility, and interactive network control for instantaneous path reconfiguration, connectivity, monitoring, and troubleshooting for over 100,000 ports. Horizon enables multiple applications, multiple speeds, and multiple protocols ranging from legacy WAN to today's 100G and beyond. Horizon's connection manager can automate or schedule connectivity tasks and packet flows from network reconfiguration to remote tool management. User-selectable port alarming combined with inherent system alarming facilitate rapid isolation of problems. Horizon dashboard views supply a constant view of network health.

## Simple

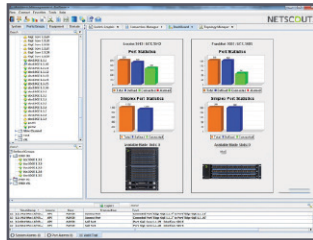
The Horizon control system includes a graphical dashboard providing users with easy navigation between systems, clear presentation of system configuration, and capacity. Simple drilldown from the system to the port level and obvious alarm tracking, reporting, troubleshooting, and activity scheduling are also provided. The Horizon graphical topology manager allows simple drag and drop connections or test access monitoring between devices for fast, guaranteed connectivity. Horizon allows you to easily define, manage, and share topologies, and Automated Cross-Switch Link management provides seamless connections between NetScout platforms.

## Secure

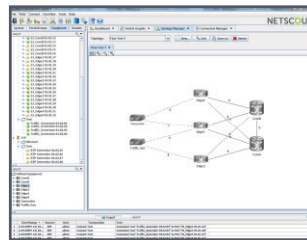
Horizon is a Linux®-based server software with a web-based thin client application, providing management of the family of nGenius 3900 series and ONPATH 2900 series packet flow switches from virtually any location. Horizon Management Software is available as an individual or redundant external server. Authentication and Authorization capabilities ensure that Horizon aligns with your corporate infrastructure policies and provide secure remote CLI and GUI access with proper role-based control and auditing for up to 128 concurrent users. STIG and JITC compliance assessment guarantee mission critical environments are always on.



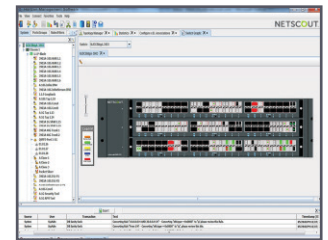
**Advanced Connection management for rapid reconfiguration.**



**Graphical Topology management for reduced complexity.**



**System dashboard for switch statistics.**



**Chassis configuration for port and sub-system detail.**

## Horizon Management Software Features and Benefits

- Intelligent connection manager to build, store, schedule, and execute changes
- Simple point-and-click provisioning for fast, assured connectivity and packet flows
- Secure, role-based access control with Authentication and Authorization
- Local and remote management of up to 32 switches and over 100,000 ports
- Automated Cross-Switch Link management for seamless connections between NetScout platforms
- Manage and share monitor, test, and generator tools
- Easily define, manage, and share topologies
- Real-time and historical statistics for increased visibility
- System alarming and user activity logging or rapid isolation of problems
- Redundant architecture for reliability and scalability
- Intuitive Graphical User Interface or CLI access for automation via scripting or 3rd party integration



**Americas East**  
310 Littleton Road  
Westford, MA 01886-4105  
Phone: 978-614-4000  
Toll Free: 800-357-7666

**Americas West**  
178 E. Tasman Drive  
San Jose, CA 95134  
Phone: 408-571-5000

**Asia Pacific**  
17F/B  
No. 167 Tun Hwa N. Road  
Taipei 105, Taiwan  
Phone: +886 2 2717 1999

**Europe**  
One Canada Square  
29th floor, Canary Wharf  
London E14 5DY, United Kingdom  
Phone: +44 207 712 1672

NetScout offers sales, support, and services in over 32 countries.

For more information, please visit [www.netscout.com](http://www.netscout.com) or contact NetScout at 800-309-4804 or +1 978-614-4000

Copyright © 2015 NetScout Systems, Inc. All rights reserved. NetScout, nGenius, InfiniStream and Sniffer are registered trademarks, nGeniusONE and Adaptive Service Intelligence are trademarks and MasterCare is a service mark of NetScout Systems, Inc. and/or its affiliates in the United States and/or other countries. All other brands and product names, and registered and unregistered trademarks are the sole property of their respective owners. NetScout reserves the right, at its sole discretion, to make changes at any time in its technical information, specifications, and service and support programs.