

# SNIFFER®

## APPLICATION INTELLIGENCE

### Application performance analysis for networking professionals

The network is the enabling technology for every mission-critical business application. As a result, network management professionals must spend hours identifying what applications are running on the network while they attempt to maintain control with effective troubleshooting.

Faced with an overwhelming need to analyze massive amounts of traffic, it is often only when applications suffer downtime that network managers gain a firm understanding of their importance to the business.

#### Application-centric View into Networked Applications

NetScout's Sniffer® Application Intelligence™ solution provides network professionals with a rich set of application metrics to isolate application performance degradations. The product provides extensive application identification with detailed statistics on individual application traffic flows, including response times, throughput, and efficiency information. Sniffer

Application Intelligence is a component of Sniffer Analysis and is included as a no-charge item with nGenius InfiniStream.

#### An Innovative, Flexible User Interface

The Sniffer Intelligence interface leverages the packets recorded by nGenius InfiniStream and extends troubleshooting capabilities by providing robust customization and analysis features for flexible insight into the performance of unique network and application environments. The workspace is designed to operate the way network people think by providing the ability to pursue one troubleshooting path and then quickly view data from another perspective. The three major components of the workspace include:

- Panels
- Views
- Sessions

#### Panels

Panels are the foundation of the Sniffer Intelligence console. Each panel displays specific transaction dimensions or performance measures from the packet flows. Panels are customizable and come in many formats. A panel may simply contain a list of applications discovered on a segment, a multi-dimensional array of clients and servers, or a graph plotted over time.



#### Benefits

Sniffer Application Intelligence speeds problem identification and resolution

- Focusing on the application packet flows running on the network
- Recognizing hundreds of known applications
- Showing which transactions are competing for network resources
- Providing quick, multi-dimensional, drill down for rapid analysis
- Leveraging packets recorded by nGenius InfiniStreams to troubleshoot complex incidents - Included with Sniffer Analysis

#### Views

Multiple panels are combined together to form a View. Views are groupings of individual panels. Out-of-the-box views contain panels grouped into categories such as applications, conversations, or Quality of Service (QoS). Views are often used as troubleshooting launch points, such that as one user reports a degradation, a view can be created to display his activity compared to other users in the same part of the network.

#### Sessions

Sessions contain all the available panels and views as well as the associated filters, streams and trace files.



Sessions can be saved for sharing and extended analysis in the future.

## Key Features

### Application Identification

Automatic recognition of hundreds of applications and protocols out-of-the-box, such as SAP R/3, Oracle, FTP, and MS Exchange, delivers an application perspective of the network and an ability to see what applications are running across the network. Custom application naming is available to define and quickly analyze the performance of any custom-developed application. Further, key application transactions can be classified and measured as individual “applications” based not only on ports and sockets, but URLs (uniform resource locators) and patterns as well.

### Hyperlocks™

Sniffer Intelligence leverages patent-pending technology to quickly filter and pivot network data. Potential sources of application performance degradation are quickly isolated by sifting through voluminous network traffic. Analysis is available on any application transaction dimension combination including client, server, application, virtual circuit (VLAN), and time. The resulting high-level view of application traffic, combined with a broad set of pre-packaged metrics, enables efficient troubleshooting while efficiently reducing Mean Time to Resolution (MTTR).

### Vital Statistics

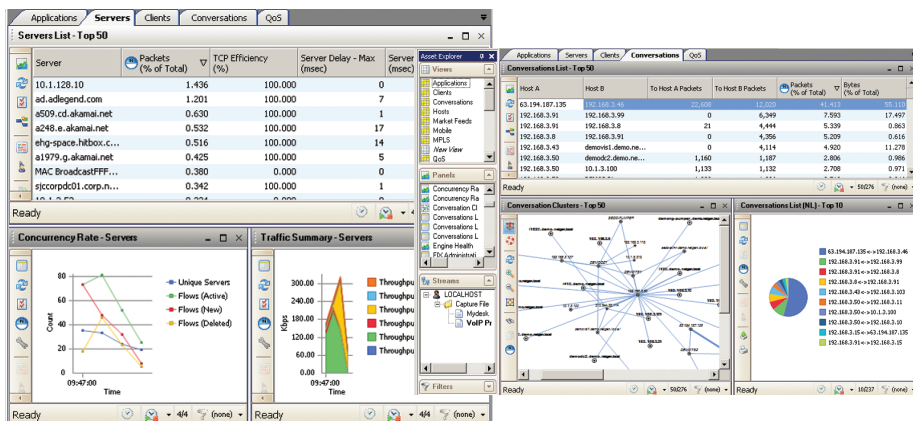
Performance anomalies are easily identified using a broad set of pre-packaged measures in panel views used to determine if, when, and where to conduct deeper analysis. Combined with HyperLock drilldown, these statistics provide the comprehensive view required for rapid problem solving. An application's performance can be gauged against response times and bandwidth consumption expectations. These statistics can be as specific as to include only response times that fall within a pre-defined threshold. This allows network professionals to see exactly how the new application is affecting, and being affected by, other applications.

### Multi-Dimensional Views

Multi-dimensional views allow sub-classifications or sub-filters combining different dimensions within a given panel. This may be used to quickly see all the client devices that contacted a particular Web server without leaving the Server panel.

### Filters

An intuitive Filter Builder provides the richest array of criteria for refining the Intelligence Console display, including addresses, applications, measures, QoS values, and VLAN IDs.



Sniffer Intelligence provides critical application metrics in a flexible format to help networking people troubleshoot complex incidents.

### About NetScout Systems

NetScout Systems provides advanced network and application service assurance solutions that deliver complete visibility into real-time, packet/flow-based operational intelligence. IT operators at the world's largest enterprises, government agencies, and service providers use the Sniffer and nGenius solutions to troubleshoot service degradations faster and more efficiently in order to reduce MTTR.

### Our world-renowned Sniffer and nGenius solutions include:

- Intelligent Data Sources for high capacity, deep-packet recording and monitoring
- Analysis Software for real-time and historical network and application performance management, troubleshooting, capacity planning, and reporting
- Advanced Intelligence for early detection and in-depth analysis of complex or specialized application services
- Comprehensive, global support, consulting and training services

### Corporate Headquarters

310 Littleton Road  
Westford, MA 01886-4105  
Phone: 978-614-4000  
Toll Free: 888-999-5946

[www.netscout.com](http://www.netscout.com)

### European Headquarters

NetScout Systems (UK) Ltd.  
100 Pall Mall  
London SW1Y 5HP  
United Kingdom  
Phone: +44 (0)20 7321 5660

### Asia/Pacific Headquarters

Room 105, 17F/B, No. 167  
TunHwa N. Road  
Taipei, Taiwan  
Phone: +886 2 2717 1999  
[www.netscout.cn](http://www.netscout.cn)

©2008 NetScout Systems, Inc. All rights reserved. NetScout, the NetScout logo, Network General, the Network General logo, nGenius, Sniffer, InfiniStream, Business Container, Business Forensics, NetVigil and Quantiva are trademarks or registered trademarks of NetScout Systems, Inc. Other brands, product names and trademarks are property of their respective owners. NetScout reserves the right, at its sole discretion, to make changes at any time in its technical information and specifications, and service and support programs.